

SITE 09

DEVELOPMENT OF TOURISM RELATED FACILITIES FOR SITE NEXT TO PATTADAKALLU HERITAGE STRUCTURE, BAGALKOTE DISTRICT UNDER THE CIRCUIT DEVELOPMENT FOR SOUTHERN KARNATAKA (HAMPI – BADAMI – AIHOLE – PATTADAKKAL - VIJAYAPURA)

PROJECT INFORMATION MEMORANDUM



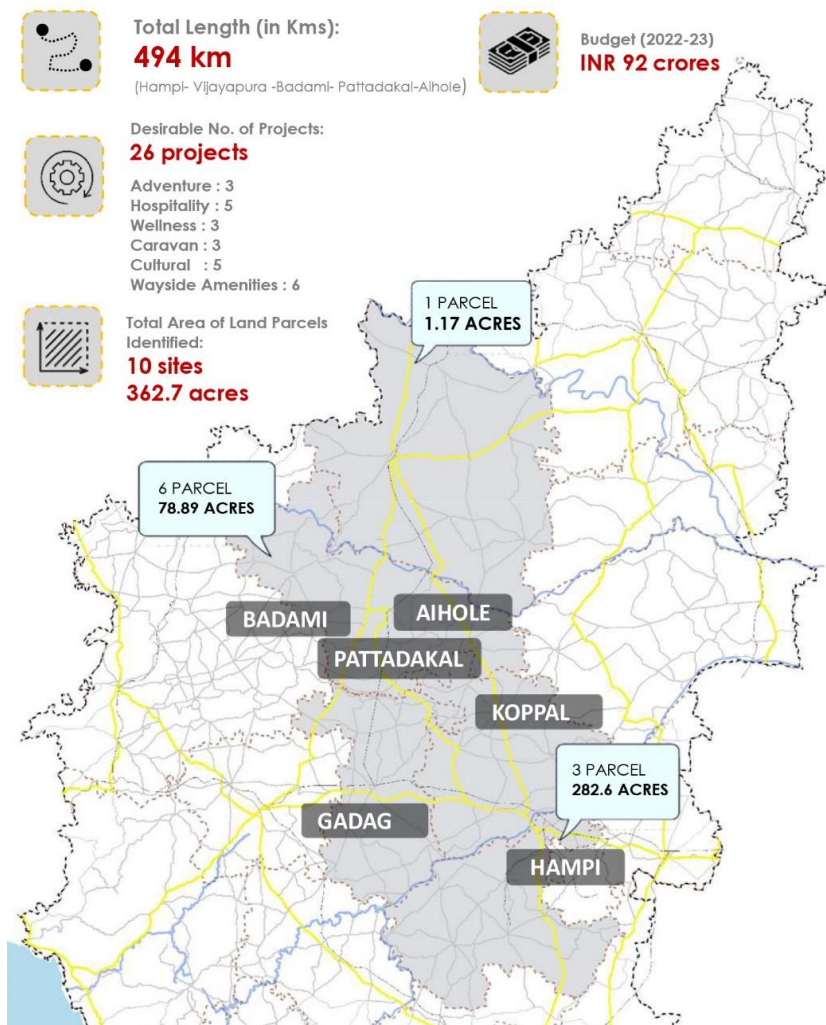
Project Information Memorandum

PROJECT BACKGROUND

Karnataka with its wide variety of tourism offerings such as beaches, hill stations, heritage monuments, national parks, wildlife sanctuaries etc. continues to be a prime tourism destination in India. Given the variety of tourism assets, the state is promoted under the tagline “One State, Many Worlds”. Department of Tourism, Government of Karnataka (the “DoT” or the “Client”) established in 1974, is vested with the responsibility to develop and promote Karnataka Tourism.

DoT intends to develop Tourist Infrastructure across sites in Circuit in Northern Karnataka (Hampi – Badami – Aihole – Pattadakal - Vijayapura) on PPP mode. The Karnataka State Budget 2022-23 has proposed for the development of Hampi – Badami – Aihole – Pattadakal – Vijayapura tourist circuit (North Circuit) and Mysuru – Srirangapatna – Hassan – Belur – Halebidu tourism circuit (South Circuit) to be developed under the PPP model to promote tourism. Development of the circuit is expected to converge with the support offered for tourism projects under the Karnataka Tourism Policy 2020-26.

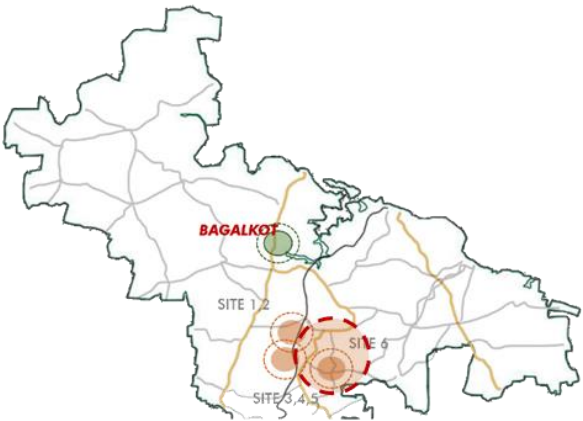
ABOUT NORTHERN TOURISM CIRCUIT



Project Information Memorandum

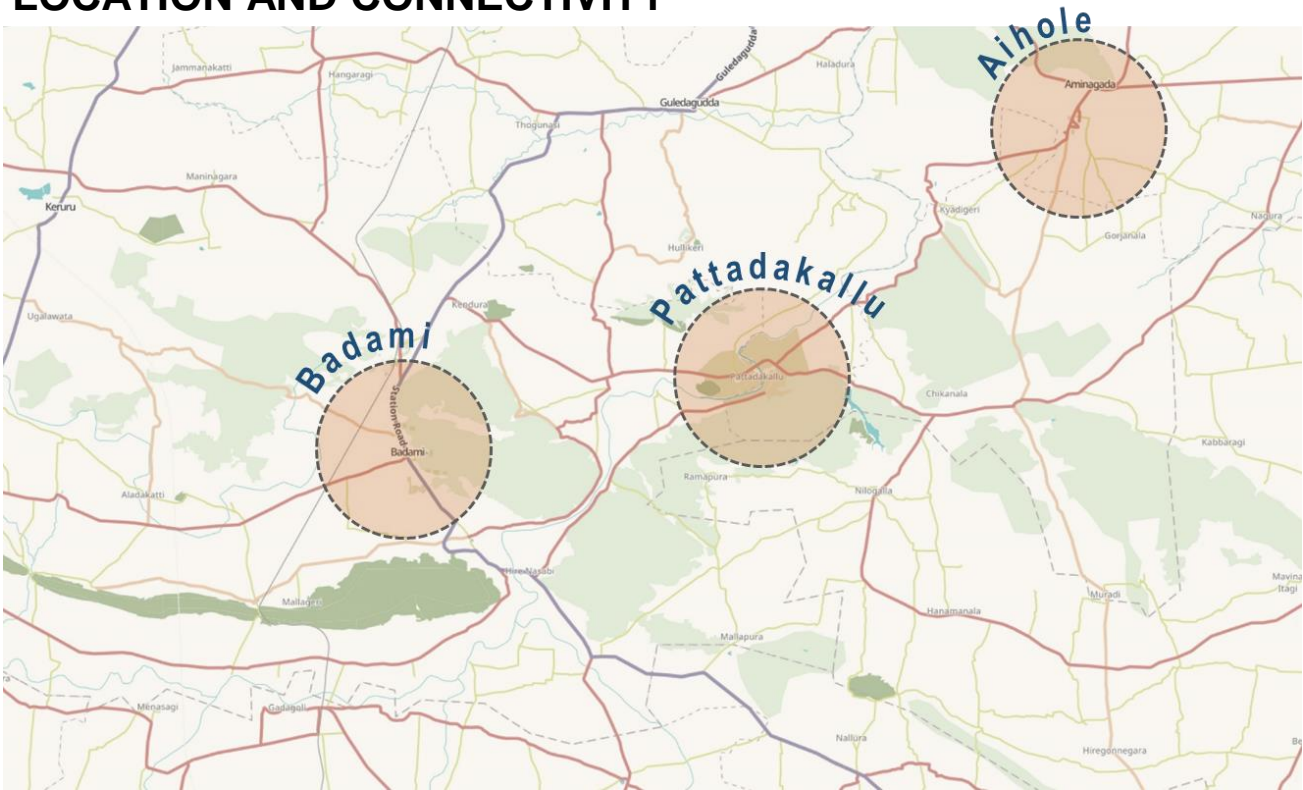
PROJECT SITE

As the site frontage lies along the NH-59, it has great accessibility. The envisaged development can accommodate eco-cottages, adventure sports activities and camping. The site has under construction cultural Centre and restaurant is being developed which will take a share of the footfall.



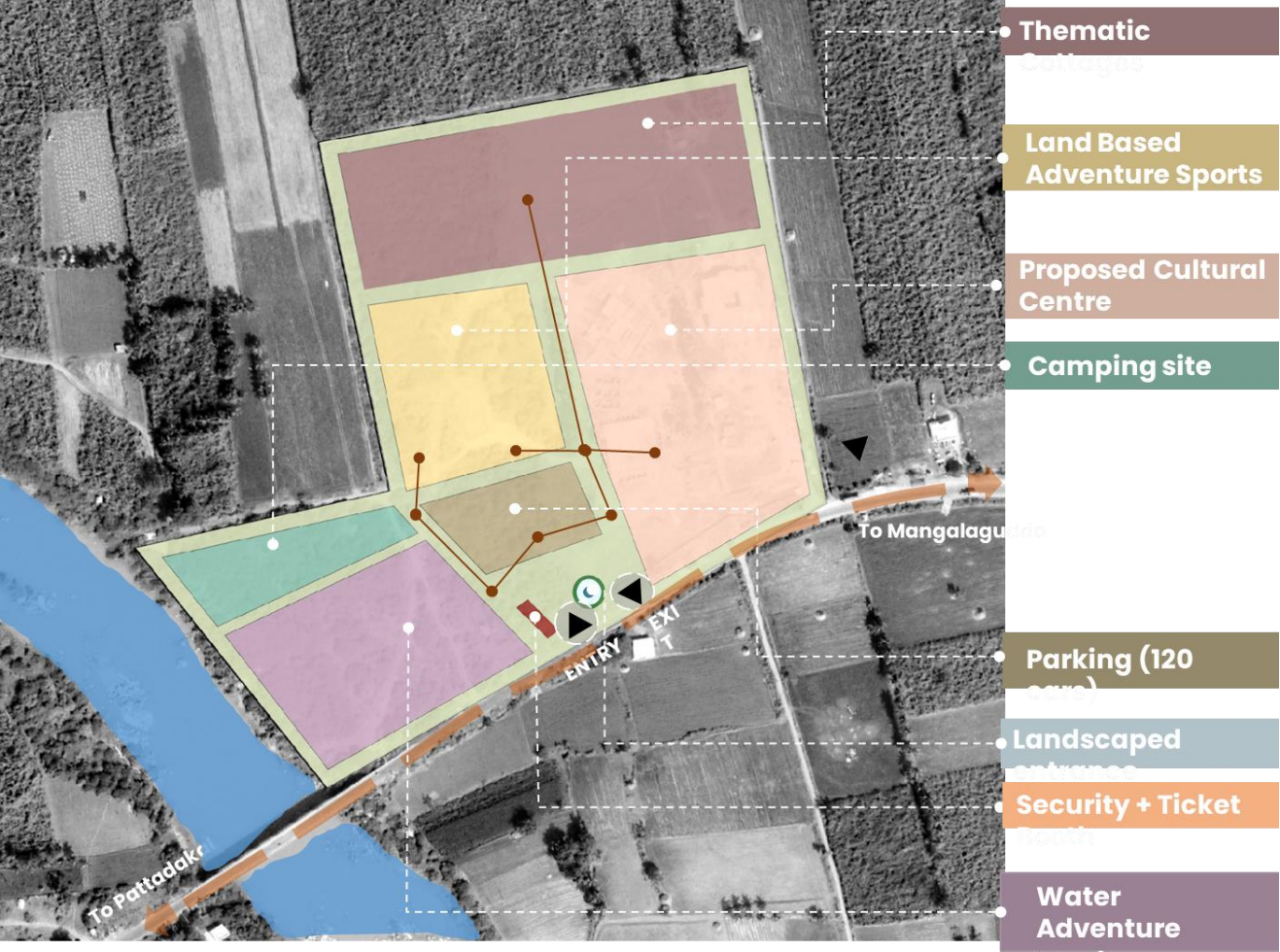
SITE	DETAILS
SITE AREA	24.8 acres
LAND OWNERSHIP	Department of Tourism, GoK
LOCATION	Along the river Malaprabha

LOCATION AND CONNECTIVITY



Project Information Memorandum

CONCEPT MASTERPLAN



SITE POTENTIAL

Site Details	Adventure	Hospitality	Wellness	Caravan	Cultural	Way Side Amenities
Site near Banashankari temple	✓	✓		✓		✓

Project Information Memorandum

PROJECT COST

The total project landed cost is tentatively **Rs 80.71 Cr**

PROPOSED COMPONENTS

The components for the site are Wayside Amenity at the proposed site are:

- Adventure Sports Zone – Land and Water Based
- Cultural Centre (U/C)
- Eco Resorts and Campsites
- Wayside Amenities
- Restrooms and Services
- Parking

